



1. Position Details

<i>Title:</i>	Arborist
<i>Reports to:</i>	Horticulture Manager, Healesville Sanctuary
<i>Location:</i>	Healesville Sanctuary
<i>Band:</i>	Specialist
<i>Tenure:</i>	Fixed Term
<i>Employment Type:</i>	Full time

2. Context

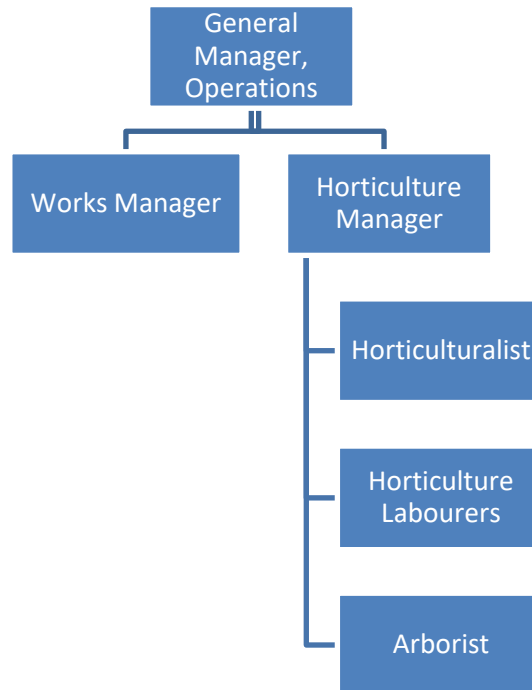
Zoo Victoria operates world-class zoo on three sites: Melbourne Zoo, Healesville Sanctuary and Werribee Open Range Zoo. Our vision is – as a world leading zoo-based conservation organization, we will fight extinction to secure a future rich in wildlife. To achieve our vision we focus on the following key action areas:

- **Conservation:** We will focus and strengthen the conservation efforts of Zoos Victoria to ensure the delivery of tangible conservation outcomes.
- **Animals:** We will strive to ensure the wellbeing and conservation relevance of every animal within our care.
- **Visitors** We will provide profound wildlife-based experiences that inspire communities to take actions that benefit wildlife conservation.
- **People** We care for ZV staff and volunteers by providing support and services, in line with our values, to enable each individual to stay safe, contribute to our vision and realise their potential.
- **Financial Sustainability** We will ensure the long-term financial sustainability of all our operations to be able to maintain and improve the value of assets and to make a meaningful, measurable and successful investment in conservation.

3. Purpose Statement

This role is responsible for delivering excellence in tree care, to maximise the visitor experience. This will be achieved through risk minimisation and presentation of tree specimens in line with interpretive goals. This position contributes to the maintenance and development of the tree collection, display of tree species, planning and implementation of new developments.

4. Reporting Lines



5. Accountabilities

Accountabilities

1. Horticulture Operations

Provision of efficient and effective Arboriculture practices that enhance the management of the Horticultural resources, whilst assisting in delivering the vision of the property and the needs of the visitor.

Ensuring gum Plantations are maintained to provide maximum yields and quality.

- Apply safe and sound arboriculture practice to the installation, maintenance and removal of trees.
- Assist in the planning and scheduling of maintenance and development works.
- Responsible for the safe handling of fuels and chemicals.
- Maintain records of all works in and around public areas including a tree data base.
- Contribute to zoo hygiene, general grounds cleaning and presentation of the property.
- Contribute to landscape maintenance and development as required.
- Assist with supervision and coordination of volunteers, community groups and staff as required.
- Ensure all works are completed in an OH&S compliant and safe manner.
- Ensure all gum collection is completed in a safe and efficient manner meeting stakeholder requirements.
- Ensure all equipment and vehicles are operated and cared for in a responsible and professional manner.

2. Visitor Service

Provide quality and positive visitor service and horticultural experiences for the visitor, in line with the Long Range and Operational Plan.

- Contributes in the development, ensuring optimum delivery, of visitor experiences consistent with HS plans.
- Supply gum and general browse to meet Life Sciences Department requirements.

3. Zoo People

- Maintains a work place where Zoo People are respected and valued through demonstration of the vision and values thus supporting a positive and fulfilling work environment.
- Demonstrates expertise and professionalism in all interactions.
- Behaves in accordance with the vision and actively displays the values of Zoos Victoria.
- Communicates openly and honestly whilst respecting others.
- Actively contributes to the team, the department and the properties performance.
- Utilises effective problem solving strategies within scope of position.

4. Projects

Contributes to project plans for new developments and minor upgrades

- Contributes to the planning and implementation of new developments.
 - Initiate and implement minor upgrade/project proposals relating to the tree/browse collection.
- Contributes to the implementation of capital projects across the property.

5. Safety

- Actively contributes to safety at ZV by being aware of the safety policies and procedures and consciously acknowledge them every day thus ensuring that ZV is a safe place to work.
- Work according to standard operating and safety procedures.
- Report and remove unsafe equipment.
- Report accidents / incidents within 24 hours of occurrence.
- Actively monitor workplace to identify hazards and take appropriate action to rectify if hazards found.
- Actively promotes a safe working culture.

Selection Criteria

Training & Education

- Certificate III Arboriculture minimum
- Chainsaw operator and tree felling certificates
- First Aid level 2
- A current Employee Status Working with Children Check required for all external appointments

Skills & Knowledge

- Demonstrated knowledge of all elements of tree climbing, pruning, felling and tree waste removal.
- Demonstrated physical capacity to carry out all elements of the role.
- Ability to set and meet goals.
- Demonstrated ability to work as part of a team delivering operational objectives.
- Sound time management skills
- Good written and verbal communication skills.
- Understanding and demonstrated commitment to OH&S & EEO principles and practices
- Computer skills

Experience

Essential

- Proven ability to deliver high standards of arboriculture with safety as a key element of operation.
- Demonstrated ability to conduct emergency tree rescues.
- Demonstrated ability to operate as an effective member of a team and ability to work with minimal supervision.
- Demonstrated experience of working in public open space.
- Current Victorian drivers licence

Desirable:

- Appropriate skills associated with the use of horticultural machinery and equipment.
- Understanding of the principles of zoological horticulture.
- Member ship of professional associations.
- EWP Operators certificate